

COPYRIGHT © Hangzhou EZVIZ Software Co., Ltd. ALL RIGHTS RESERVED.

Any and all information, including, among others, wordings, pictures, graphs are the properties of Hangzhou EZVIZ Software Co., Ltd. (hereinafter referred to as “EZVIZ”). This user manual (hereinafter referred to as “the Manual”) cannot be reproduced, changed, translated, or distributed, partially or wholly, by any means, without the prior written permission of EZVIZ. Unless otherwise stipulated, EZVIZ does not make any warranties, guarantees or representations, express or implied, regarding to the Manual.


About this Manual

The Manual includes instructions for using and managing the product. Pictures, charts, images and all other information hereinafter are for description and explanation only. The information contained in the Manual is subject to change, without notice, due to firmware updates or other reasons. Please find the latest version in the EZVIZ™ website (<http://www.ezviz.com>).

Revision Record

New release – January, 2024

Trademarks Acknowledgement

EZVIZ™, ™, and other EZVIZ's trademarks and logos are the properties of EZVIZ in various jurisdictions. Other trademarks and logos mentioned below are the properties of their respective owners.

Legal Disclaimer

TO THE MAXIMUM EXTENT PERMITTED BY APPLICABLE LAW, THE PRODUCT DESCRIBED, WITH ITS HARDWARE, SOFTWARE AND FIRMWARE, IS PROVIDED “AS IS”, WITH ALL FAULTS AND ERRORS, AND EZVIZ MAKES NO WARRANTIES, EXPRESS OR IMPLIED, INCLUDING WITHOUT LIMITATION, MERCHANTABILITY, SATISFACTORY QUALITY, FITNESS FOR A PARTICULAR PURPOSE, AND NON-INFRINGEMENT OF THIRD PARTY. IN NO EVENT WILL EZVIZ, ITS DIRECTORS, OFFICERS, EMPLOYEES, OR AGENTS BE LIABLE TO YOU FOR ANY SPECIAL, CONSEQUENTIAL, INCIDENTAL, OR INDIRECT DAMAGES, INCLUDING, AMONG OTHERS, DAMAGES FOR LOSS OF BUSINESS PROFITS, BUSINESS INTERRUPTION, OR LOSS OF DATA OR DOCUMENTATION, IN CONNECTION WITH THE USE OF THIS PRODUCT, EVEN IF EZVIZ HAS BEEN ADVISED OF THE POSSIBILITY OF SUCH DAMAGES.

TO THE MAXIMUM EXTENT PERMITTED BY APPLICABLE LAW, IN NO EVENT SHALL EZVIZ'S TOTAL LIABILITY FOR ALL DAMAGES EXCEED THE ORIGINAL PURCHASE PRICE OF THE PRODUCT.

EZVIZ DOES NOT UNDERTAKE ANY LIABILITY FOR PERSONAL INJURY OR PROPERTY DAMAGE AS THE RESULT OF PRODUCT INTERRUPTION OR SERVICE TERMINATION CAUSED BY: A) IMPROPER INSTALLATION OR USAGE OTHER THAN AS REQUESTED; B) THE PROTECTION OF NATIONAL OR PUBLIC INTERESTS; C) FORCE MAJEURE; D) YOURSELF OR THE THIRD PARTY, INCLUDING WITHOUT LIMITATION, USING ANY THIRD PARTY'S PRODUCTS, SOFTWARE, APPLICATIONS, AND AMONG OTHERS.

REGARDING TO THE PRODUCT WITH INTERNET ACCESS, THE USE OF PRODUCT SHALL BE WHOLLY AT YOUR OWN RISKS. EZVIZ SHALL NOT TAKE ANY RESPONSIBILITIES FOR ABNORMAL OPERATION, PRIVACY LEAKAGE OR OTHER DAMAGES RESULTING FROM CYBER ATTACK, HACKER ATTACK, VIRUS INSPECTION, OR OTHER INTERNET SECURITY RISKS; HOWEVER, EZVIZ WILL PROVIDE TIMELY TECHNICAL SUPPORT IF REQUIRED. SURVEILLANCE LAWS AND DATA PROTECTION LAWS VARY BY JURISDICTION. PLEASE CHECK ALL RELEVANT LAWS IN YOUR JURISDICTION BEFORE USING THIS PRODUCT IN ORDER TO ENSURE THAT YOUR USE CONFORMS TO THE APPLICABLE LAW. EZVIZ SHALL NOT BE LIABLE IN THE EVENT THAT THIS PRODUCT IS USED WITH ILLEGITIMATE PURPOSES.

IN THE EVENT OF ANY CONFLICTS BETWEEN THE ABOVE AND THE APPLICABLE LAW, THE LATTER PREVAILS.

Table of Contents

IMPORTANT SAFETY INSTRUCTIONS	1
Overview	2
1. Package Contents	2
2. General.....	2
3. Basics	3
About the Name Card.....	4
Setup.....	4
1. Get the EZVIZ App.....	4
2. Wiring	5
3. Installation	7
4. Connect Your EZVIZ Video Doorphone To Your Smartphone.....	10
5. Configure the RFID Badge.....	11
6. Multiple Unlocking Methods.....	12
View Your Device on the EZVIZ App.....	13
1. Live View of the Intercom Panel.....	13
2. Settings.....	14
EZVIZ Connect.....	15
1. Use Amazon Alexa.....	15
2. Use Google Assistant	16
SAFETY PRECAUTIONS	17
Initiatives on the Use of Video Products.....	18

IMPORTANT SAFETY INSTRUCTIONS



Important!

1. Please read the user manual carefully before installing or using this product.
2. If you are installing this product for a third party, please remember to leave the manual or a copy of it with the end user.

Safety measures:

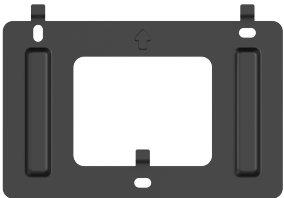
1. To operate this system in complete safety, it is essential that the installers, users, and technicians follow all of the safety procedures described in this manual.
2. Specific warnings and warning symbols are given for items if necessary.
3. The product must be set up according to the applicable standards in the country where it is installed.

Overview

1. Package Contents



Monitor (x2)
7" touch screen



Wall Bracket for Monitor (x2)



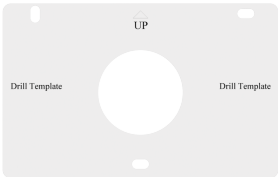
Power Adapter for Monitor(x2)



Intercom Panel (Doorbell)
with a Weather-proof Shield (x1)



Drill Template for Intercom Panel (x1)



Drill Template for Monitor (x2)



Screwdriver (x1)



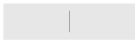
Badges (x6)



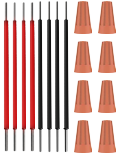
Screw Kit (x3)



DC 24V Power Supply Jack
Connector Cable (x2)



Name card (x2)



Wires and Wire Connectors (x2)



Regulatory Information (x2)



Quick Start Guide (x2)

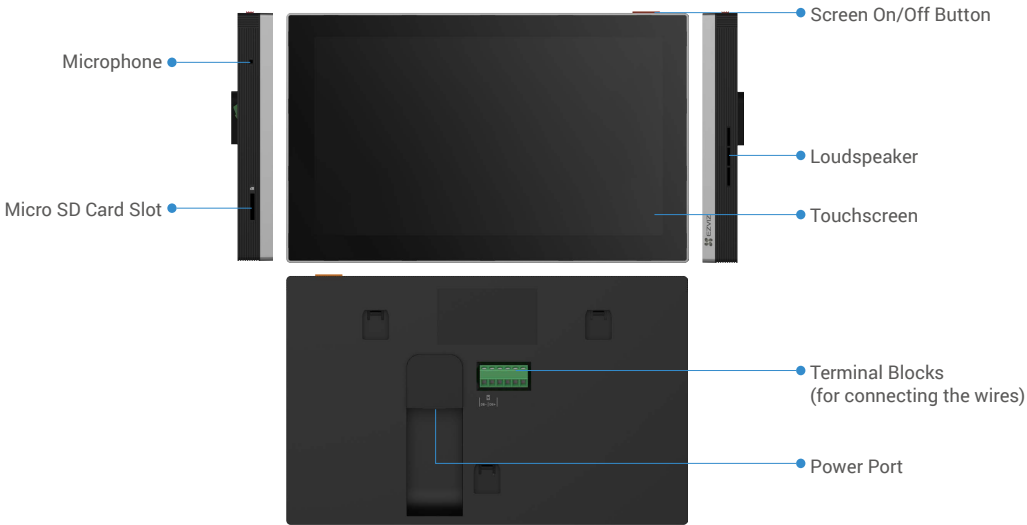
2. General

The kit is an ideal internet-connected intercom system for two families sharing a main entrance. It includes a shared intercom panel with two separate call buttons, and two independent indoor monitors that each family uses to manage complex accesses at home. It also provides simpler ways to grant access remotely via the EZVIZ App, offering multiple unlocking options such as scanning a QR code, or using an RFID card. It adds additional security features to monitor activities with real-time mobile alerts.

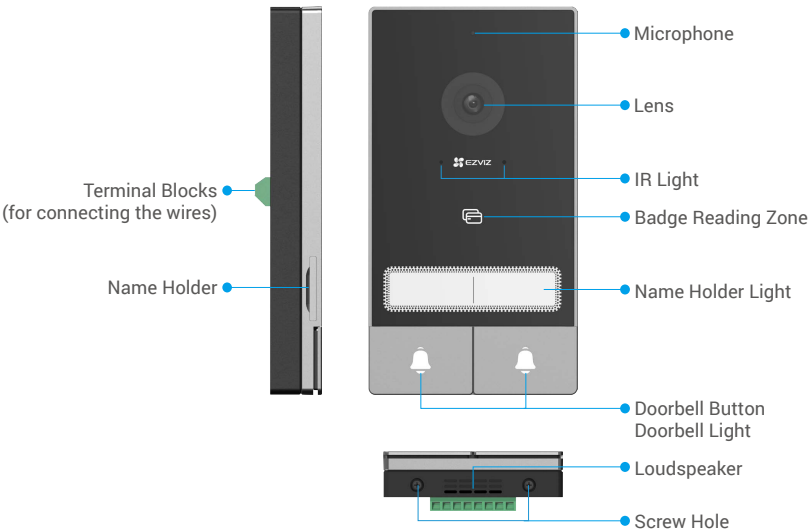
To get the most out of your system, please read this instruction manual carefully.

3. Basics

Monitor



Intercom Panel (Doorbell)



- When someone presses the doorbell button, the inside monitor rings and the video is displayed.
- To change the name card in the name holder, pull the name holder tray from the left side of the device.

Name	Description
Power Port	For powering up the monitor.
Screen On/Off Button	<ul style="list-style-type: none"> Press to turn on/off the screen. Press and hold for 8s to restart the monitor.
Micro SD Card Slot	Insert a micro SD card(sold separately) into this slot, and initialize the card in the EZVIZ app before using it. Recommended compatibility: Class 10, maximum space 512GB.

About the Name Card

- A name card has been pasted into the intercom panel included in the package, and you can write the name directly on it.
- There are 2 additional name cards included in the package, please keep them for further use.
- The name card can be torn off, and a new name card can be pasted over it.
- If you don't want to stick a name card, you can also use a marker to write the name directly on the name holder.
- The area of the name holder can be lit up, which can be managed through the EZVIZ App.
- We recommend you draw out the name holder and write the name before installing the intercom panel on the weather-proof shield.

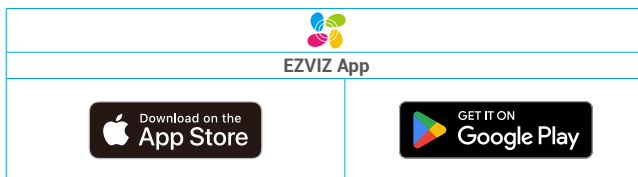
Setup

Follow the steps to set your system:

1. Get the EZVIZ app, and log in to your EZVIZ app account.
2. Wiring your system.
3. Install the Intercom Panel and monitor.
4. Add the monitor to your EZVIZ account.

1. Get the EZVIZ App

1. Connect your mobile phone to Wi-Fi (suggested).
2. Download and install the EZVIZ app by searching "EZVIZ" in the App Store or Google Play™.
3. Launch the app and register an EZVIZ user account.

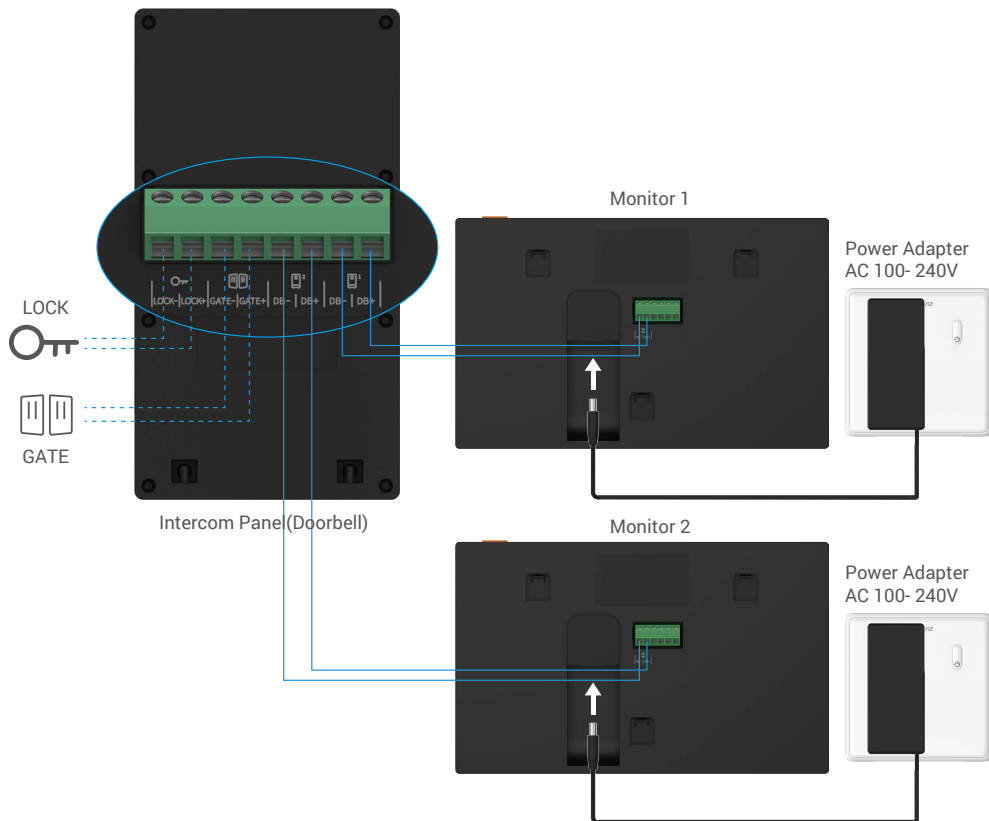


- ❗ If you have already used the app, please make sure that it is the latest version. To find out if an update is available, go to the app store and search for EZVIZ.

2. Wiring

In order to avoid the risks of interference and malfunction, do not pass the wires for your video doorphone through the same sheath as the electrical wires.

 **Warning:** Do not double up the wires to increase the cross-section under any circumstances.



 **Warning:** Please make sure that all the wires are well connected before you plug the power adapter into a wall outlet.

If you have reserved a DC 24V power supply hole on the wall, you can install the monitor above the hole and connect the monitor to the power supply (**24V DC**) by using the DC 24V power supply Jack connector cable, so that no exposed cables will be left on the wall.



Please follow the instructions below to connect the wires, if not, it may cause serious damage to the device.

1. Connect the **Red (+24V DC)** wire from the DC 24V power supply Jack connector cable to the **+24V DC** wire from your wall.
2. Connect the **Black (Ground)** wire from the DC 24V power supply Jack connector cable to the **Ground** wire from your wall.

DC 24V Power Supply Jack Connector Cable

Red (+24V DC)

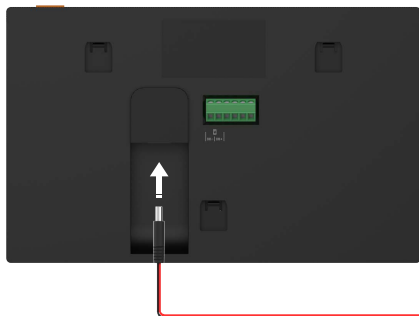
Black (Ground)

Connect to

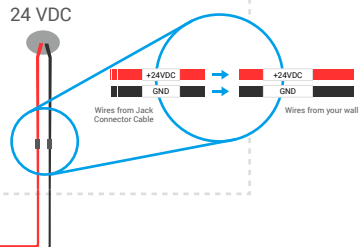
Power supply on your wall

+24V DC wire

Ground



Recommended Installation Location



Warning: Please make sure that all the wires are well connected before you connect the another end of the DC 24V power supply Jack connector cable into the monitor's power port.

1-1 wiring diagram

	$\varnothing 2 \times 0.75\text{mm}^2$	$\varnothing 2 \times 1.5\text{mm}^2$	Twisted Pair(TP)
	0-50m	0-100m	up to 120m
	1-10m	1-10m	1-10m

2.1. Connect the Video Doorphone (Monitor, Intercom Panel)

Properly connect the wires according to the wiring diagram (1-1). Connect the terminals DB- and DB+ of the monitor to intercom panel DB- and DB+ terminals.

2.2. Connect an Electric Strike Plate or Lock

Connect it directly to terminals LOCK- and LOCK+ on the back of the intercom panel.

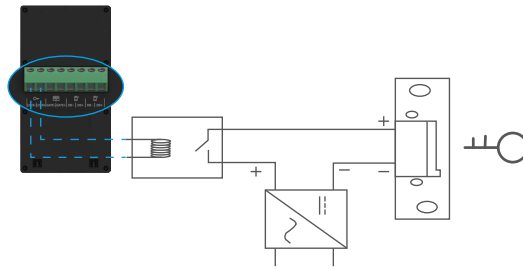
For wiring, refer to the label on the back of the intercom panel.

Note that this function is only valid if the screen is displaying the exterior video feed. An indicator will appear to confirm.

Important: To ensure that the electric strike plate or lock can be unlocked by the video doorphone, you should meet the following two conditions:

1. The electric strike plate or lock that you order must have a mechanical memory.
2. The power supply to the electric strike plate or lock must not exceed 12V/1.1A

If the power supply to the electric strike plate or lock exceeds 12V/1.1A, do as follows.



2.3. Connect a Gate Motor

Directly connect the gate motor wires to terminals GATE- and GATE+ on the back of the intercom panel. The intercom panel provides a 'dry'-contact connection, without an electric current, to connect to the button for your automated gate.

Note that this function is only valid if the screen is displaying the exterior video feed. An indicator will appear to confirm.

Important: Breaking capacity of the gate control: 12V/2A.

2.4. Power on the Monitor

Connect the monitor to power outlet with the power adapter to power on.(AC 100- 240V).

- When the monitor is connected to power, the screen turns on automatically.
- The power outlet shall be installed near the power adapter and shall be easily accessible.

Important: If the wires in your home cannot be well connected to the terminal blocks on the back of the device (Monitor and Intercom Panel), for example:

Q: How to do with it, when your wires has too large cable diameter, and is a BVR cable , and it cannot be welded?

A: We recommend you try one of the following solutions as you needed.

Option 1: Use wire stripper to adjust the thickness of the cable.

Before	Operate	After
		 Connect the wire end to the terminal block

Option 2: Connect your wires to the terminal blocks by using the wires and wire connectors included in the package.

Before	Operate	After
		 Connect the wire end to the terminal block

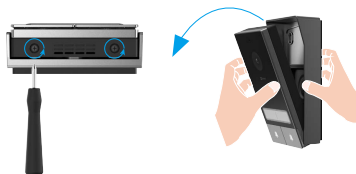
3. Installation

Advice and important instructions:

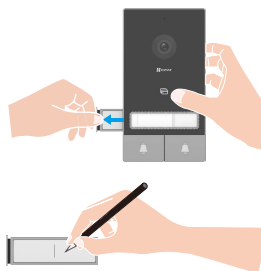
- If you test your product before installing it, ensure that you do not test it with the Intercom Panel and the monitor in the same room to avoid the video doorphone emitting a shrill noise.
- Do not expose the intercom panel lens to direct sunlight or a reflective surface.
Tip: we recommend that you use a protective sheath when doing the cabling in order to protect the cables against breakage and bad weather.
- For the EZVIZ model, so as to get the most out of monitor's Wi-Fi function, we recommend that you check that your Wi-Fi network is accessible in your planned installation location.

3.1. Install the Intercom Panel

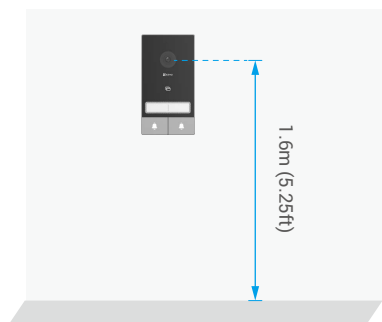
- 1 Remove the screws under the intercom panel, and tilt the intercom panel forwards.



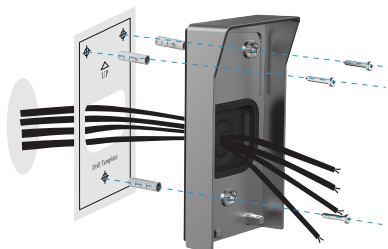
- 2 Pull out the name holder and write the name on the name card, and then put back the name holder.



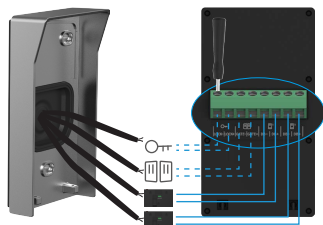
- 3 The lens of the panel must be placed at a height around 1.60m.



- 4 Place the drill template, take the wires through the holes of the drill template and the weather-proof shield, then firmly attach the weather-proof shield with anchors and screws to the wall.



- 5 Connect the wires to the terminal blocks of the intercom panel according to the wiring diagram 1-1.(Use the screwdriver included).



- 6 Fit the intercom panel onto its weather-proof shield.



- 7 Re-install the attachment screws with the screwdriver (included).



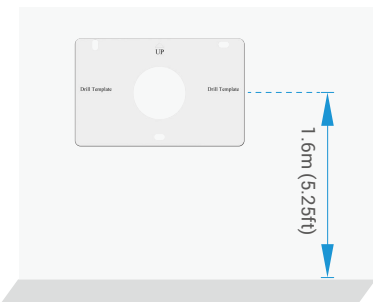
Important: For a better image quality, please tear off the protective film from the intercom panel before using it.



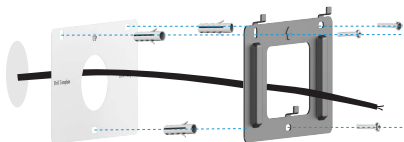
Tip: It is recommended that the wires be passed through a sheath to protect them from impacts and weather.

3.2. Install the Monitor

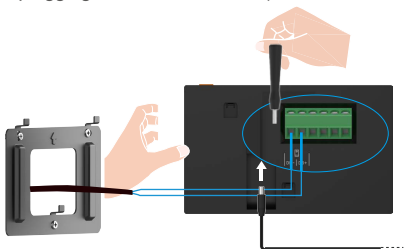
- 1 Place the drill template for monitor so that the monitor screen is at a height of around 1.6 m above the ground.



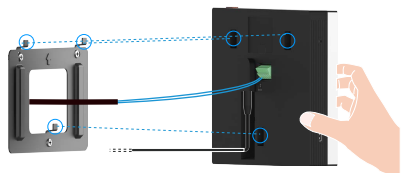
- 2 Route the wires coming from the intercom panel through the holes of the drill template and the wall bracket, then fix the wall bracket with anchors and screws to the wall.



- 3 Connect the wires coming from the intercom panel, and connect the power adapter to the power port in the back of the monitor (without plugging it into the wall outlet).



- 4 Place the monitor on the wall bracket.



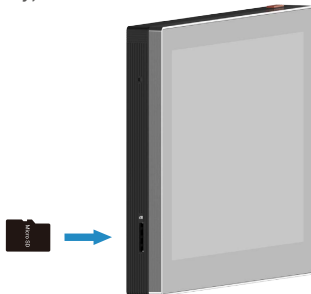
- 5 Plug the adapter into the wall outlet.



Warning: during the installation, do not connect the power supply to a wall outlet.

3.3. Install Micro SD Card (Optional)

1. Insert a micro SD card (sold separately) into the SD card slot as shown in the figure below.



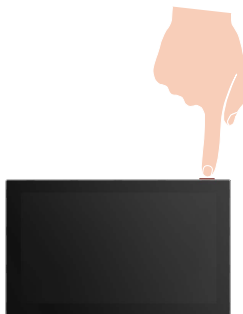
i After installing the micro SD card, you should initialize the card in the EZVIZ app before using it.

2. In the EZVIZ app, tap the Record List in the Device Settings interface to check the SD card status.
3. If the memory card status displays as Uninitialized, tap to initialize it.

i The status will then change to **Normal** and it can store videos.

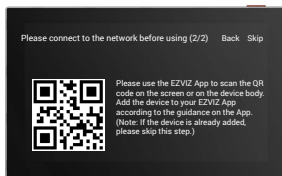
4. Connect Your EZVIZ Video Doorphone To Your Smartphone

1. Press the "Screen On/Off Button" to turn on the screen.



2. Follow the screen wizard to connect the monitor to Wi-Fi (recommended).
3. On your smartphone, log in to your EZVIZ app account, on the Home screen, tap "+" on the upper-right corner to go to the Scan QR Code interface.

4. Scan the QR code on the screen of the monitor.



5. Follow the EZVIZ app wizard to add the monitor to the EZVIZ app.

- i** If you failed to connect the monitor to Wi-Fi, or you skip this step (step(1/2) on the monitor), you can choose to use EZVIZ app to finish Wi-Fi configuration:
- 1) Connect your smartphone to Wi-Fi (suggested)
 - 2) Log in to your EZVIZ app, and scan the QR code on the monitor.
 - 3) Follow the EZVIZ app wizard to finish Wi-Fi configuration and add the video doorphone to your the EZVIZ app.

5. Configure the RFID Badge

1) Add RFID badges:

When turning on the device for the first time, it is essential to configure the badges in the EZVIZ app:



1. Log in to your EZVIZ app account.
2. Go to the settings page of the Intercom Panel, choose Unlock Settings > Card Management > Add cards.
3. Set the name of the card, and tap "Next step".
4. Set the term of validity, and tap "Next step".
5. Put the RFID badge on the badge reading zone, the doorbell indicator flash 3 times indicates the badge add successfully.
6. Tap "finish".

2) Delete RFID badges



1. Log in to your EZVIZ app account.
2. Go to the settings page of the Intercom Panel, choose Unlock Settings > Card Management.
3. Tap to choose the card you want to delete, and tap "Delete" -> "OK" to delete the card.

6. Multiple Unlocking Methods

(1) Open the gate/door via the monitor

1. Go to the main menu on your monitor
2. Tap the  or  to unlock the lock or gate.

(2) Open the gate/door via the EZVIZ App

1. Log in to your EZVIZ app account.
2. Go to the intercom panel live view page, Tap the  or  to open the lock or gate.

(3) Open the gate/door with smart RFID badge

• Unlock the the electric strike plate/ Lock:

Quickly swipe your pre-programmed badge on the RFID reading zone. One short beep confirms the opening of the electric strike plate/Lock.

• Unlock the Gate motor:

Hold the badge for at least 3 seconds on the RFID reading zone. One short beep confirms the opening of the gate.

(4) Open the gate/door via QR code

1. Log in to your EZVIZ App account.
2. Go to the Intercom Panel Settings page, select Unlock Settings > QR Code Management > Add QR Code.
3. Set the name of the card, and tap “Next”.
4. Set the term of validity, and tap “Next”.
5. Select whether to unlock the lock or the door, or both, then tap Next and a QR code will be generated.
6. Share the QR code to your visitor.
7. Align the QR code with the lens of the Intercom Panel, keep a distance of about 10cm. One short beep confirms the opening of the gate.

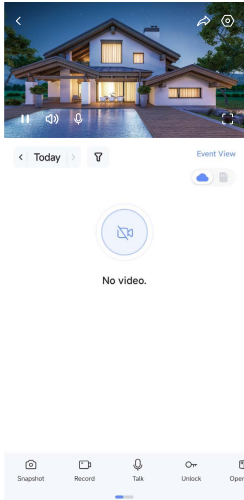
 Three short beeps indicates the failure of opening lock/gate.

View Your Device on the EZVIZ App

i The app interface may be different due to version update, and the interface of the app you installed on your phone shall prevail.

1. Live View of the Intercom Panel

When you launch the EZVIZ app, the device page displays are shown below.
You can view and listen to a live feed, take snapshots, record videos, and choose video definition as needed.




i Swipe left and right across the screen to see more icons.

Icon	Description
	Share. Share your device.
	Settings. View or change the device settings.
	Popup. View the video displayed on top of another app you are using.
	Full Screen Display. Tap to enjoy a full screen display for your filed of view.
	Snapshot. Take a snapshot.
	Record. Manually start/stop recording.
	Talk. Tap the icon, and then follow the on-screen instructions to talk to or listen to people in front of the doorbell.
	Unlock. Tap to unlock the electric strike plate or lock.
	Open gate. Tap to unlock the gate.
	Definition. Select video resolution as you needed.
	Nearby Device. Tap to check available devices nearby.
	Tip. Tap to see more information about the device
	Rearrange. Rearrange the sequence of all the functions above.

i Please refer to the actual interface for specific information.

2. Settings

In the settings page, you can set the parameters of the system.

Parameter	Description
Name	View or tap to customize the name of your device here.
Unlock Settings	You can manage your cards and generate a temporary unlocking QR code for your visitors.
Intelligent Detection	You can select between different detection types for your device.
Message Notification	You can manage the device message and EZVIZ app notification.
Audio Settings	You can set relevant audio parameters for your device.
Image Settings	You can set relevant image parameters for your device.
Screen Settings	You can set the screen brightness and auto-lock screen time here.
Light Settings	You can set relevant light parameters for your device.
Record List	You can see the device storage status of the memory card.
Privacy Settings	You can encrypt your videos with encryption password, and customize the privacy area here.
Network Settings	<div><div>You can see the Wi-Fi name and the connection status.</div><div> If you want to change your device's Wi-Fi, please go to the screen, and choose settings-> Network and time-> Current Wi-Fi, and tap to choose the Wi-Fi you want to connect to.</div></div>
Device Information	You can see the device information here.
More	You can enable the terminal authorization and manage your client here.
Restart Device	Tap to restart the device.
Delete Device	Tap to delete the device from EZVIZ app.

1. Use Amazon Alexa

These instructions will enable you to control your EZVIZ devices with Amazon Alexa. If you run into any difficulties during the process, please refer to **Troubleshooting**.

Before you start, make sure that:

1. EZVIZ devices are connected to the EZVIZ app.
2. In the EZVIZ app, turn off the "Video Encryption" and turn on the "Audio" in the Device Settings page.
3. You have an Alexa-enabled device (i.e Echo Spot, Echo-Show, All-new Echo-Show, Fire TV (all generations), Fire TV stick (second generation only), or Fire TV Edition smart TVs).
4. The Amazon Alexa app is already installed on your smart device, and you have created an account.

To Control EZVIZ devices with Amazon Alexa:

1. Open the Alexa app and select "Skills and Games" from the menu.
2. On the Skills and Games screen, search for "EZVIZ", and you will find "EZVIZ" skills.
3. Select your EZVIZ device's skill, then tap **ENABLE TO USE**.
4. Enter your EZVIZ username and password, and tap **Sign in**.
5. Tap the **Authorize** button to authorize Alexa to access your EZVIZ account, so that Alexa can control your EZVIZ devices.
6. You will see "EZVIZ has been successfully linked", then tap **DISCOVER DEVICES** to allow Alexa to discover all your EZVIZ devices.
7. Go back to Alexa app menu and select "Devices", and under devices you will see all your EZVIZ devices.

Voice Command

Discover a new smart device via the "Smart Home" menu in the Alexa app or the Alexa Voice Control function. Once the device is found, you can control it with your voice. Speak simple commands to Alexa.

Answer the EZVIZ Intercom Panel with Alexa

After you've connected your EZVIZ Intercom Panel to your Alexa-enabled device, you can speak to your visitors through your Echo or Fire TV device.

To speak to your visitor, you can say:

- [Alexa, answer \[EZVIZ Intercom Panel Name\]](#).
- [Alexa, talk to \[EZVIZ Intercom Panel Name\]](#).



Your device's name for example: "show xxxx camera," can be changed in the EZVIZ app. Each time you change the name of the device, you will need to discover the device again to update the name.

Troubleshooting

What should I do if Alexa fails to discover my device?

Check if there are any Internet connecting problems.

Try to restart the smart device and re-discover the device on Alexa.

Why the device's status is "Offline" on Alexa?

Your device might have been disconnected from the network. Restart the smart device and re-discover on Alexa.

Check if your router is connected to the Internet and try again.



For details about countries where Amazon Alexa is available, see Amazon Alexa's official website.

2. Use Google Assistant

With the Google Assistant, you can activate your EZVIZ device and watch live by speaking Google Assistant voice commands.

The following devices and apps are required:

1. A functional EZVIZ app.
2. In the EZVIZ app, turn off the "Video Encryption" and turn on the "Audio" in the Device Settings page.
3. A TV with functional Chromecast connecting to it.
4. The Google Assistant app on your phone.

To get started, follow the steps below:

1. Set up the EZVIZ device and make sure it works properly on the app.
2. Download the Google Home app from the App Store or Google Play Store™ and log into your Google account.
3. On the Myhome screen, tap "+" on the upper-left corner, and select "Set up device" from the menu list to go to the Set up interface.
4. Tap **Works with Google**, and search for "EZVIZ", where you will find "EZVIZ" skills.
5. Enter your EZVIZ username and password, and tap **Sign in**.
6. Tap the **Authorize** button to authorize Google to access your EZVIZ account, so that Google can control your EZVIZ devices.
7. Tap **Return to app**.
8. Follow the above steps to complete the authorization. When synchronization is completed, EZVIZ service will be listed under your list of services. To see a list of compatible devices under your EZVIZ account, tap on the EZVIZ service icon.
9. Now try some commands. Use the name of the camera that you created when you set up the system.

Users can manage devices as a single entity or in a group. Adding devices to a room allows users to control a group of devices at the same time using one command.

See the link for more information:

<https://support.google.com/googlehome/answer/7029485?co=GENIE.Platform%3DAndroid&hl=en>

 For additional information about the device, please refer to www.ezviz.com/eu.

SAFETY PRECAUTIONS

Any damage caused by a failure to adhere to the manual shall void the warranty. We assume no liability for damages resulting therefrom!

We cannot be held responsible for any damage to property or persons caused by incorrect use or a failure to adhere to the safety instructions.

This product has been manufactured in full compliance with safety instructions. In order to maintain this status and get the most out of the product, users must adhere to the safety instructions and warnings contained in this manual.



: This symbol indicates that there is a risk of electric shock or short-circuit.

- You should only use this product with a voltage between: 100-240 Volts and 50-60 hertz.
- Never attempt to use this device with a different voltage.
- Ensure that all the system's electrical connections conform to the instructions for use.
- In commercial establishments, ensure that you adhere to the electrical installation accident prevention regulations.
- In schools, training facilities, workshops, etc. qualified personnel must be on hand to monitor electronic equipment operation.
- You must follow the instructions for use of any other devices connected to the system.
- Please contact an experienced person if you have any doubts regarding equipment operation or safety.
- Never plug in or unplug electrical equipment with wet hands.
- When installing this product, check that the power supply cables are not at risk of being damaged.
- Never replace damaged electrical cables yourself! In this case, remove them and call an expert.
- The mains supply should be located close to the device and must be easily accessible.
- A switching device (a switch disconnecter, circuit breaker or equivalent device) must be easily accessible and integrated into the installation of the building wiring for equipment which is permanently connected to the network.
- To ensure the device has sufficient ventilation, keep the area around the device unobstructed.
- Ventilation should not be blocked by covering the ventilation opening with an object such as a newspaper, tablecloth or curtain, etc).
- No open flame sources, such as lit candles, should be placed on the device.
- Comply with the product's operating temperature.
- The device should not be exposed to running or splashing liquid and no object filled with liquid should be placed on the device.

Initiatives on the Use of Video Products

Thank you for choosing EZVIZ products.

Technology affects every aspect of our life. As a high-tech company, we are increasingly aware of the role technology plays in improving business efficiency and quality of life, but at the same time, the potential harm of its improper usage. For example, video products are capable of recording real, complete and clear images. This provides a high value in retrospect and preserving real-time facts. However, it may also result in the infringement of a third party's legitimate rights and interests if improper distribution, use and/or processing of video data takes place. With the philosophy of "Technology for the Good", EZVIZ requests that every end user of video technology and video products shall comply with all the applicable laws and regulations, as well as ethical customs, aiming to jointly create a better community.

Please read the following initiatives carefully:

1. Everyone has a reasonable expectation of privacy, and the installation of video products should not be in conflict with this reasonable expectation. Therefore, a warning notice shall be given in a reasonable and effective manner and clarify the Doorbelling range, when installing video products in public areas. For non-public areas, a third party's rights and interests shall be evaluated when installing video products, including but not limited to, installing video products only after obtaining the consent of the stakeholders, and not installing highly-invisible video products.
2. The purpose of video products is to record real activities within a specific time and space and under specific conditions. Therefore, every user shall first reasonably define his/her own rights in such specific scope, in order to avoid infringing on a third party's portraits, privacy or other legitimate rights.
3. During the use of video products, video image data derived from real scenes will continue to be generated, including a large amount of biological data (such as facial images), and the data could be further applied or reprocessed. Video products themselves could not distinguish good from bad regarding how to use the data based solely on the images captured by the video products. The result of data usage depends on the method and purpose of use of the data controllers. Therefore, data controllers shall not only comply with all the applicable laws and regulations and other normative requirements, but also respect international norms, social morality, good morals, common practices and other non-mandatory requirements, and respect individual privacy, portrait and other rights and interests.
4. The rights, values and other demands of various stakeholders should always be considered when processing video data that is continuously generated by video products. In this regard, product security and data security are extremely crucial. Therefore, every end user and data controller, shall undertake all reasonable and necessary measures to ensure data security and avoid data leakage, improper disclosure and improper use, including but not limited to, setting up access control, selecting a suitable network environment (the Internet or Intranet) where video products are connected, establishing and constantly optimizing network security.
5. Video products have made great contributions to the improvement of social security around the world, and we believe that these products will also play an active role in more aspects of social life. Any abuse of video products in violation of human rights or leading to criminal activities are contrary to the original intent of technological innovation and product development. Therefore, each user shall establish an evaluation and tracking mechanism of their product application to ensure that every product is used in a proper and reasonable manner and with good faith.