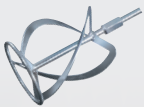




OPTIONAL ACCESSORIES

MIXING PADDLE REPLACEMENT



Article number: 5907800701  
Barcode: 4046664063681

PAINT AND MORTAR STIRRER INCLUDING 2<sup>ND</sup> PADDLE

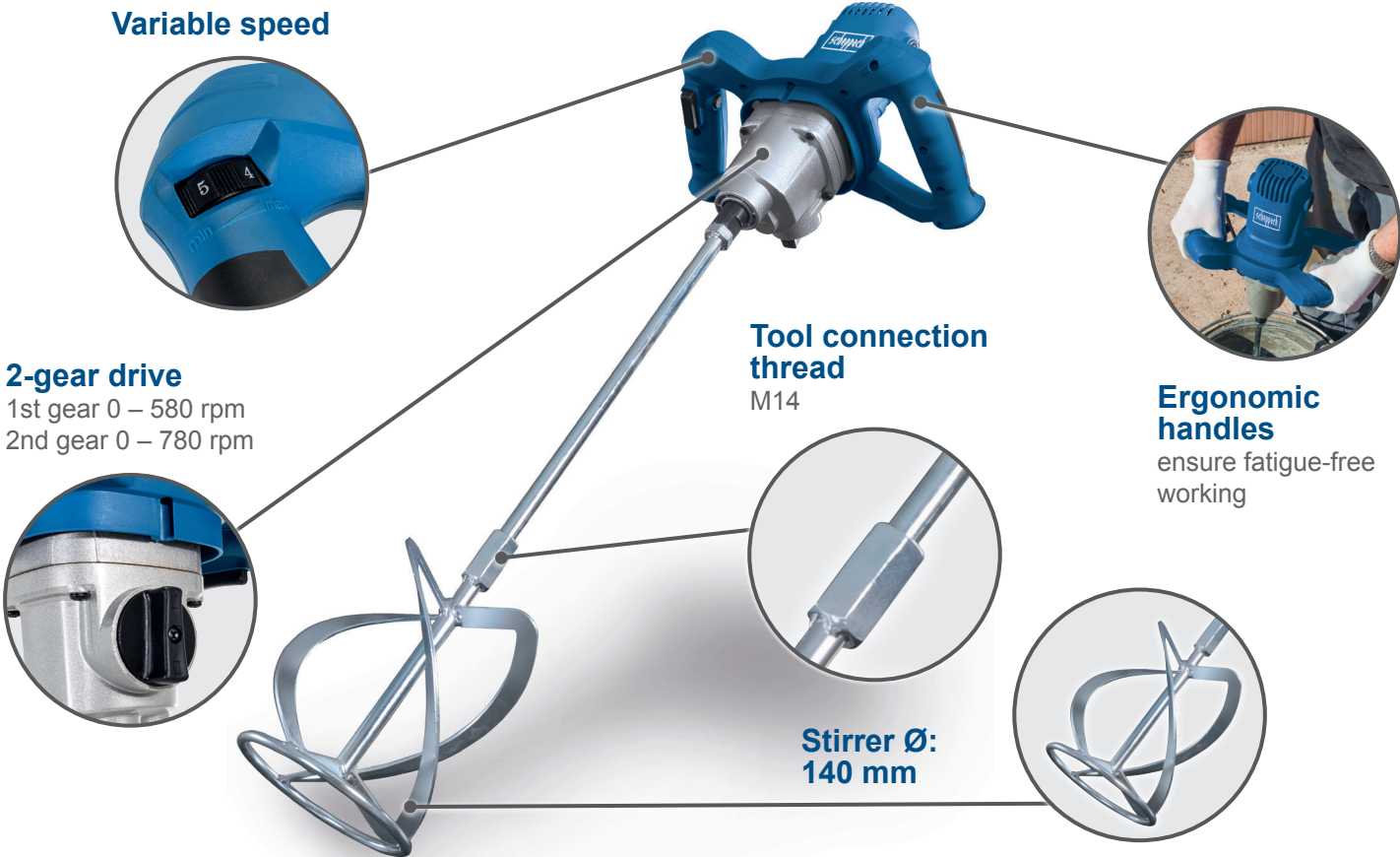
- Ideal for mixing mortar, plaster, paint etc.
- 2-speed gearbox for high torque and mixing performance
- Continuously variable speed control 0 – 580 or 0 – 780 rpm
- Powerful 1600 W engine
- Quick and easy change of the stirring attachment
- Ergonomic handles for convenient working
- Robust stirrer receptacle with M14 thread
- Including second spiralled stirrer attachment



SPECIFICATIONS	
Dimensions	310 x 190 x 330 mm
Motor	230 V~ / 50 Hz
Power	1600 W
Variable speed, two gears	0 – 580 / 0 – 780 rpm
Shaft length	590 mm
Tool connection thread	M14

LOGISTICAL DATA	
Weight net / gross	6.9 / 7.6 kg
Packaging dimensions	340 x 230 x 350 mm
Article number	5907803901
Barcode	4046664043737
20 Container	910 pcs
40 Container	1890 pcs
40 HQ Container	2210 pcs

Variable speed



PRODUCT DETAILS

1600 W 230 V connection



Variable speed  
0 – 580 / 0 – 780 U/min

M14 thread



Clockwise  
paint and mortar stirrer

Anti-clockwise  
paint and mortar stirrer



The PM1600 features an anti-clockwise and a clockwise stirrer for different mixing materials (runny or viscous substances)

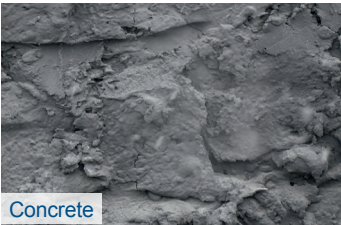
Clockwise



Anti-clockwise



2IN1



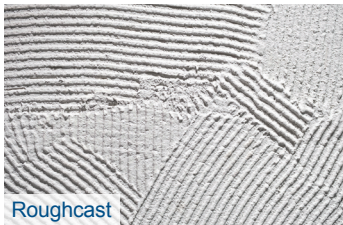
Concrete



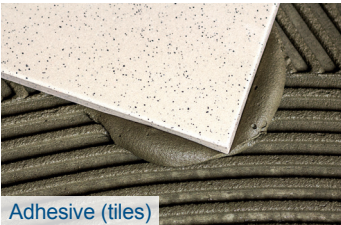
Plaster



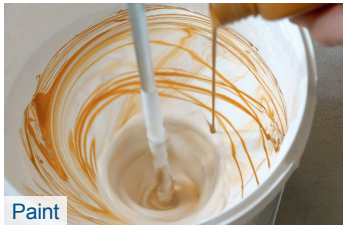
Mortar



Roughcast



Adhesive (tiles)



Paint



EXAMPLES OF USE  
SUITABLE FOR

Interior fittings



Exterior-renovation



Garden



Construction site

