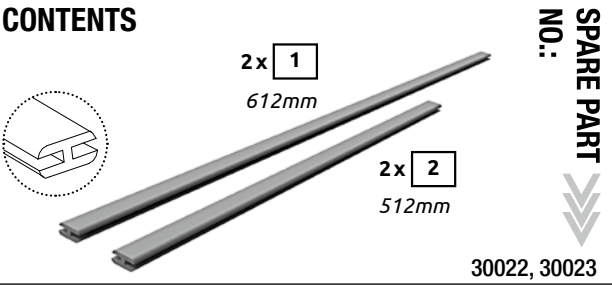
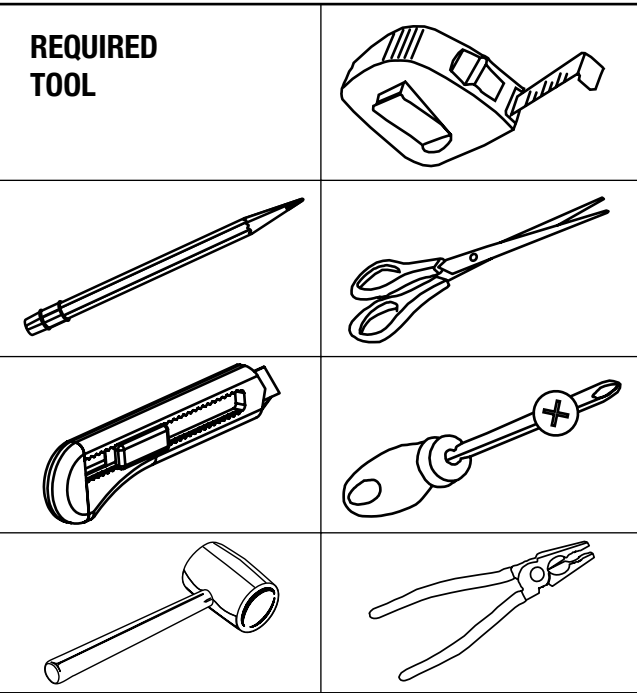




PRIMASTER

EN Telescopic Window Screen



1. INTRODUCTION

In order to ensure the most seamless assembly possible, read the following safety information and assembly instructions carefully and keep the manual handy for future reference. The manual is part of the product and takes you step by step to the finished insect screen. Please include when passing the product on to third parties.

2. PROPER USE

The product protects the user from flying insects in living areas by attaching the former to window and door frames. Application of the product for other purposes, as well as changes to the product are prohibited and can cause personal injuries, and damage the product. The manufacturer takes no responsibility for ensuing damages to the product as well as general damages through assembly. The product is not intended for commercial use.

3. LEGEND

WARNING! The signal word is used for medium risk danger, which, when not avoided, can lead to death or heavy injury.

ATTENTION! The signal word is used for low risk danger, which, when not avoided, can lead to light or moderate injury.

4. SAFETY INSTRUCTIONS

WARNING! Potentially life-threatening risk of injury to children and babies! The product is not a toy. Never leave your child alone or unattended with the product. The packaging and contents pose a risk of suffocation, strangulation and injury. Children are not aware of these dangers. Due to the danger of falling, only attach the product to windows and doors which can be accessed from outside without risk. When attaching or removing the product, please don't lean out of the window/door and don't press against the insect screen from inside.

ATTENTION! There is a risk of injury through

improper assembly and use of tools. Use work gloves, if necessary. Incomplete assembly kits or damaged parts may, under no circumstances, be used for assembly. Function and safety can thus be impacted. Protect the product and any flammable parts from heat sources and fire.

5. TECHNICAL DATA

Model: Telescopic Window Screen 130x150 cm
Max. clearance measurements (WxH): 126x144 cm
Min. clearance measurements (WxH): 75x83 cm
installation depth: 12 mm

6. SCOPE OF DELIVERY

Check the scope of delivery directly after unpacking to ensure everything has been included and there are no faults. Begin the assembly only when you are sure that all parts are present and undamaged. Do not accidentally dispose of assembly materials when disposing of the packaging material.

7. INSTALLATION

Consider the safety information and follow assembly steps 1 – 13. Use the required tools carefully, to avoid injuring yourself or others.

8. CLEANING

Clean your insect screen regularly with a damp fibre cloth. Only use mild cleaning products, if required, to avoid damaging the product.

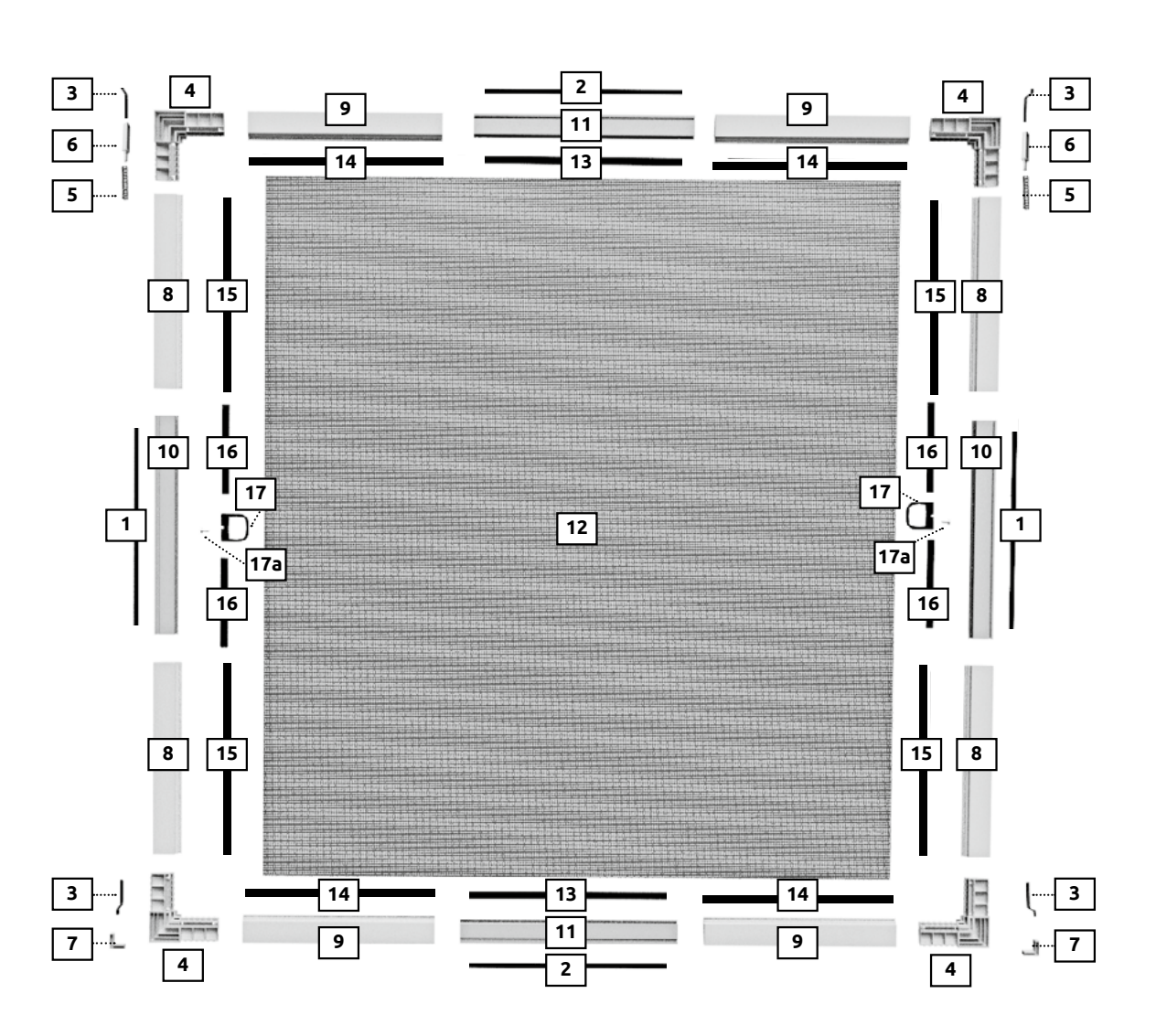
9. DISPOSAL

Dispose of the packaging material (boxes, foils etc.) separately through a recycling collection point. The disused product can also be disposed of through a collection point. Information on this matter can be obtained from your local authority or city administration.

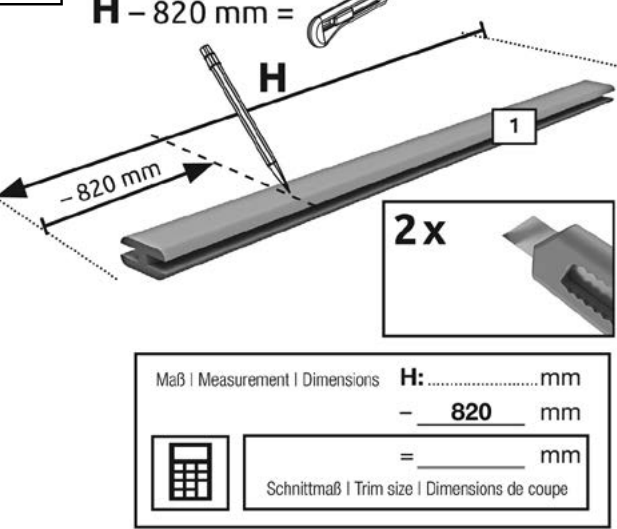
10. FAQ

Where can the product be attached?
The frame is attached to the outside of the window frame with suspension springs.

OVERVIEW

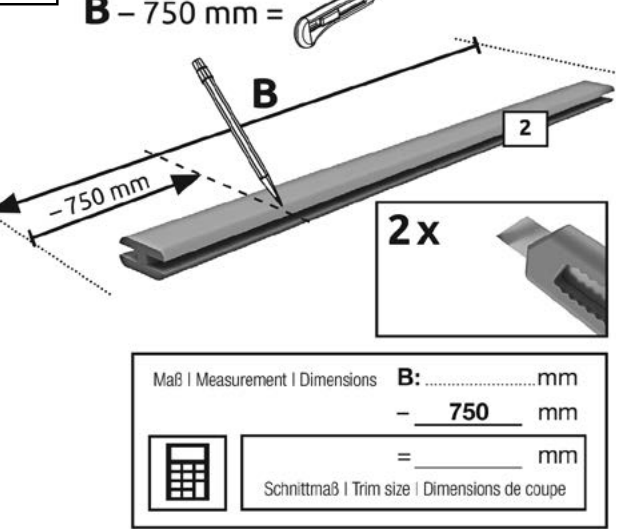


2



Shorten both distancing elements **1** to the desired length H minus 820 mm with a cutter. **EXAMPLE:** Measured clearance height H = 1000 mm – 820 mm = 180 mm. **ATTENTION:** Risk of injury! Use the knife with caution.

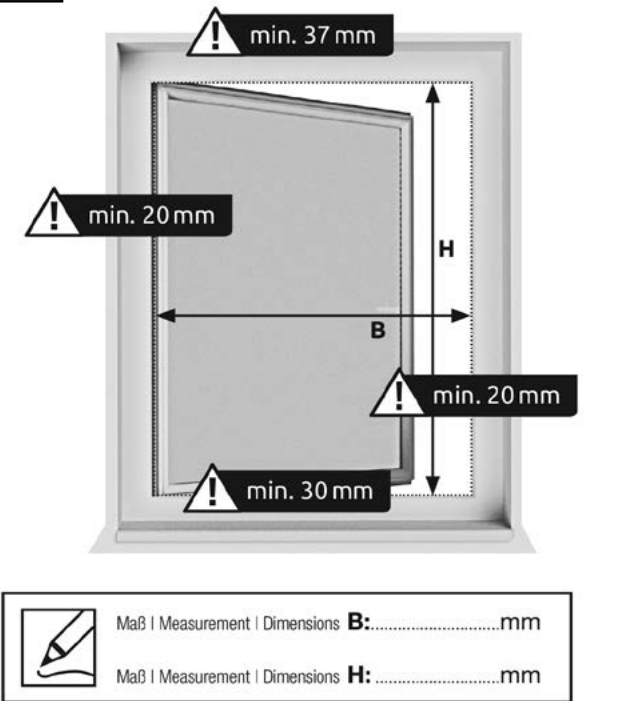
3



Shorten both distancing elements **2** to the desired length B minus 750 mm with a cutter. **EXAMPLE:** Measured clearance width B = 900 mm – 750 mm = 150 mm. **ATTENTION:** Risk of injury! Use the knife with caution.

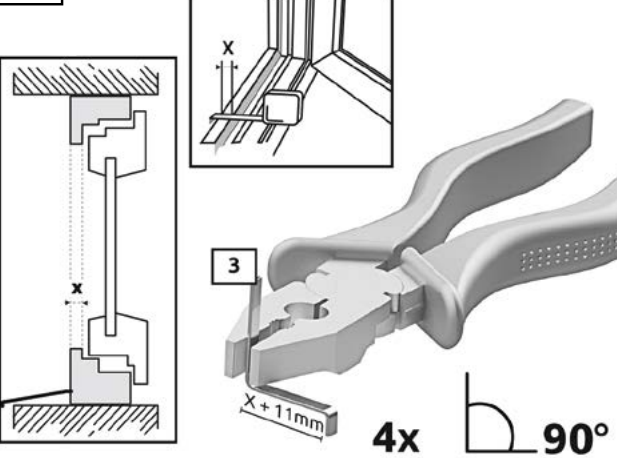
Note: Subject to mistakes, changes and setting errors.
Date of information: 03/2025

1



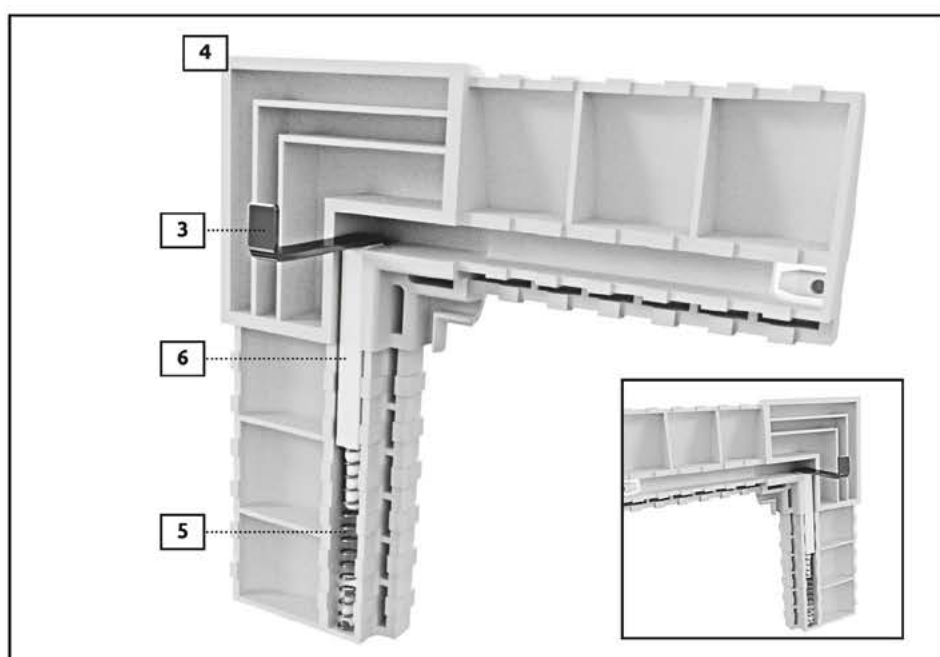
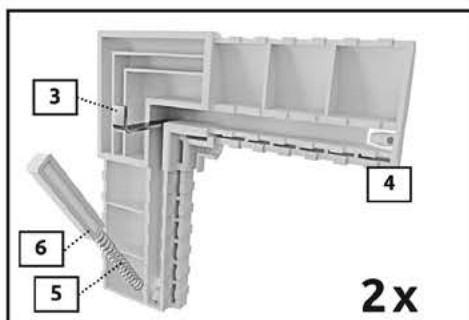
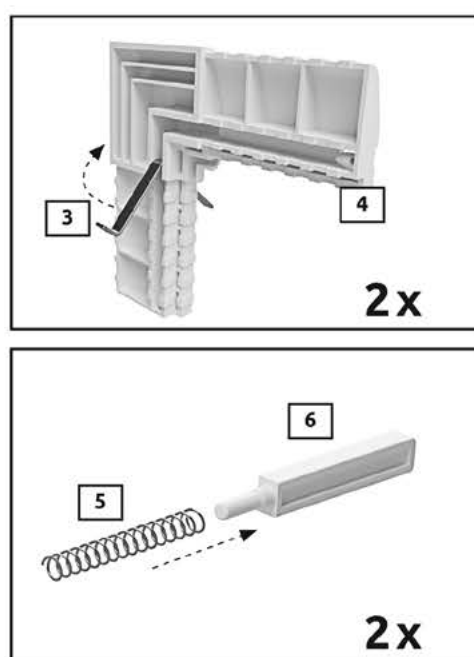
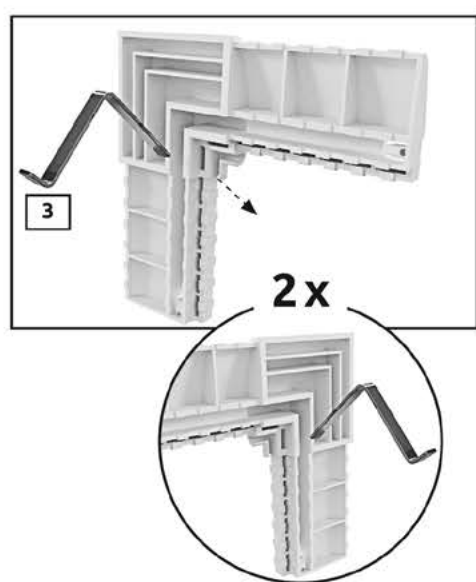
Measure the clearance width measurement B, by measuring the horizontal inner distance to the open window. Measure the clearance height measurement H, by measurement the vertical inner distance to the open window. **ATTENTION:** You will need a contact area of at least 20 mm to the sides, 37 mm above and 30 mm below the window, in order to mount the insect protection frame. **NOTICE:** Take care to take the measurements in millimetres. 1 cm = 10 mm

4



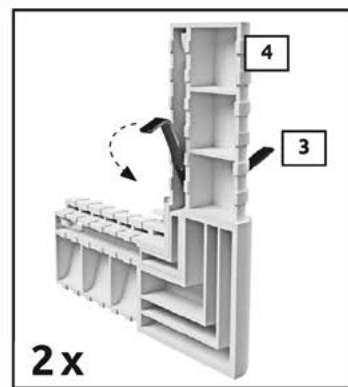
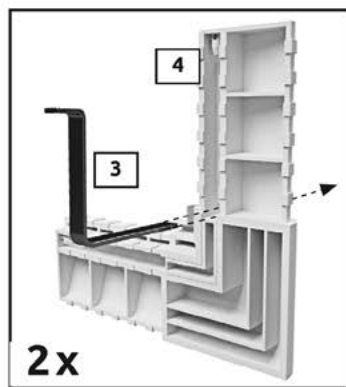
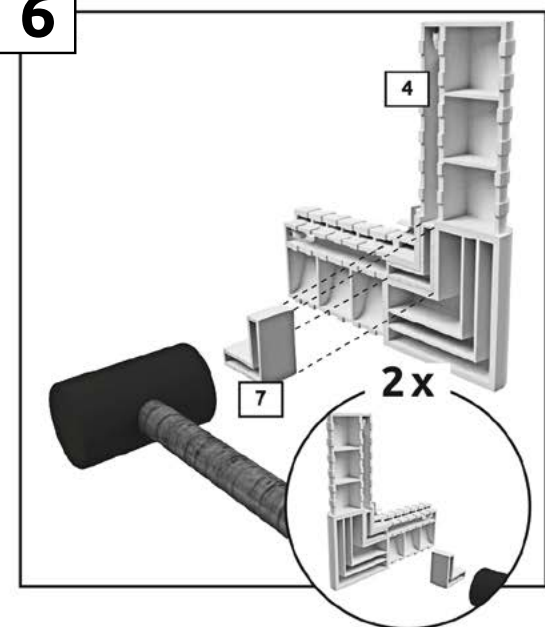
Measure the blind frame strength X of the window frame with measuring tape. The blind frame is the outermost frame section when the window is open. Make a mark of blind frame measurement X plus 11 mm on the suspension springs **3**. Flange the suspension springs **3** with pliers.

5



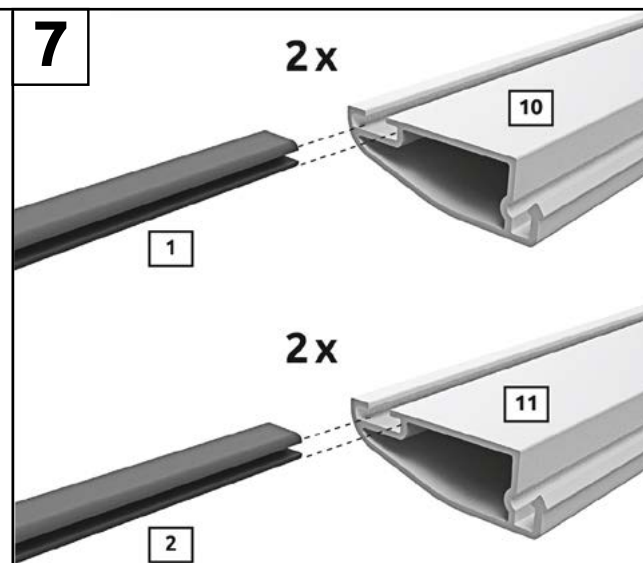
Insert both suspension hooks **3** through both upper corner connectors **4**. Connect the hook **5** with the pressure pin **6**. Insert the connected part into the intended recess of the corner connector **4**.

6



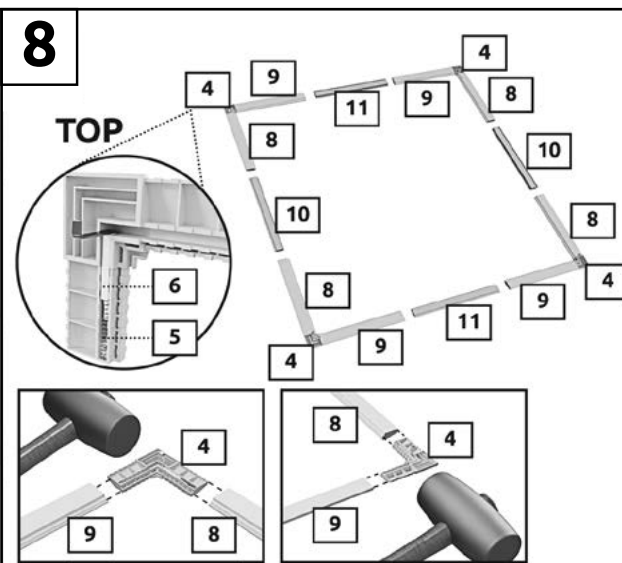
Hit the plastic hook **7** with a hammer into both lower corner connectors **4**. Insert both suspension hooks **3** through both lower corner connectors **4**.

7



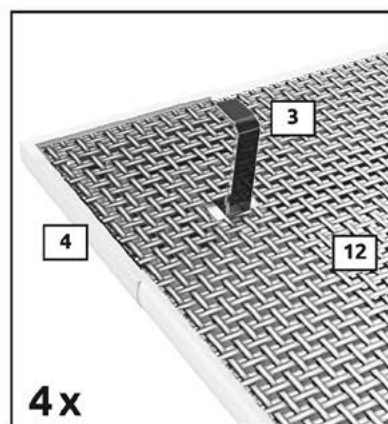
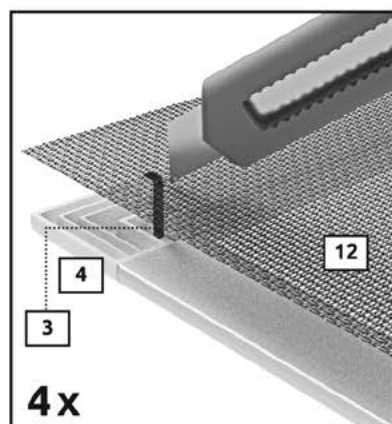
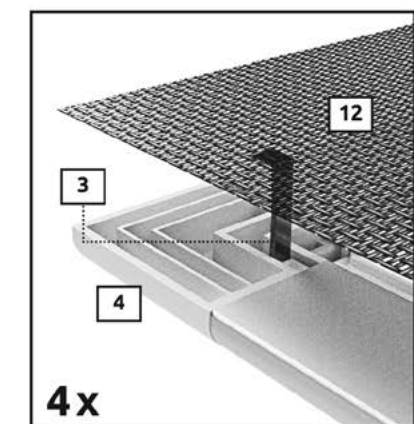
Insert the distancing elements **1** into both middle sections **10**. Insert the distancing elements **2** into both middle sections **11**.

8



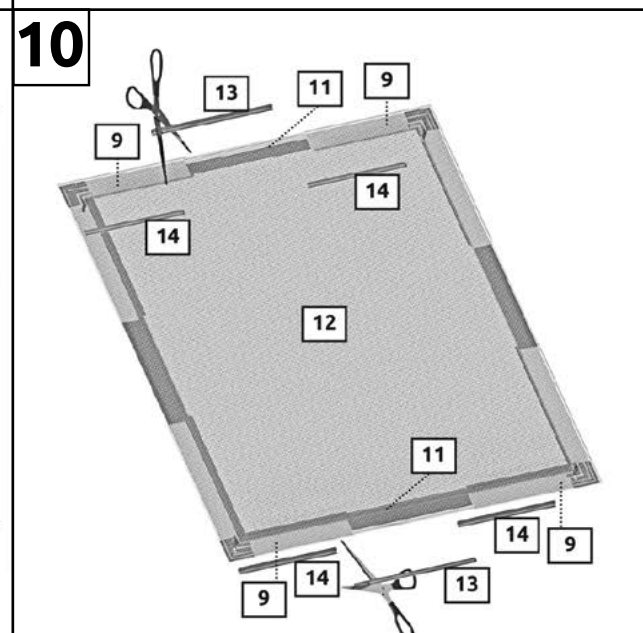
Connect the sections **8** and **9** with corner connectors **4** using a rubber hammer. Connect the sections **10** to the corner sections **8**, as well as the middle sections **11** to the corner sections **9**.

9

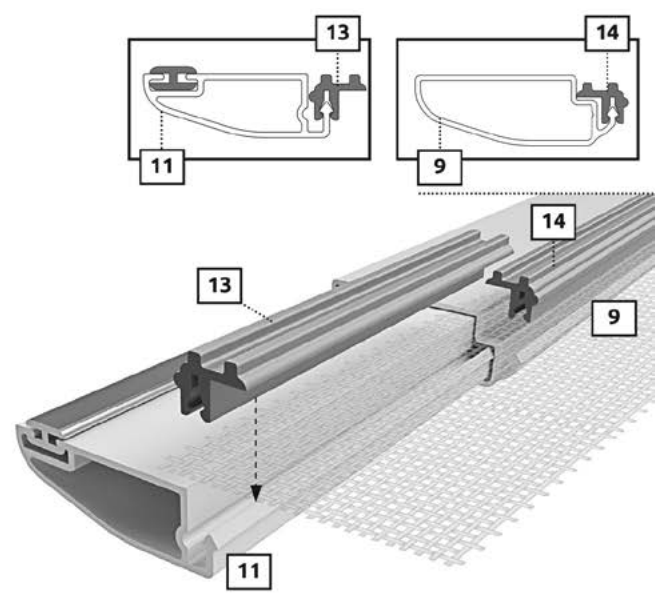


Roll the material **12** over the frame. Make an incision in the material where the suspension hook **3** is located, so the hook can penetrate the material.
NOTICE: Only cut the material in an outward motion so as not to damage the surface.
ATTENTION: Risk of injury! Use the knife with caution.

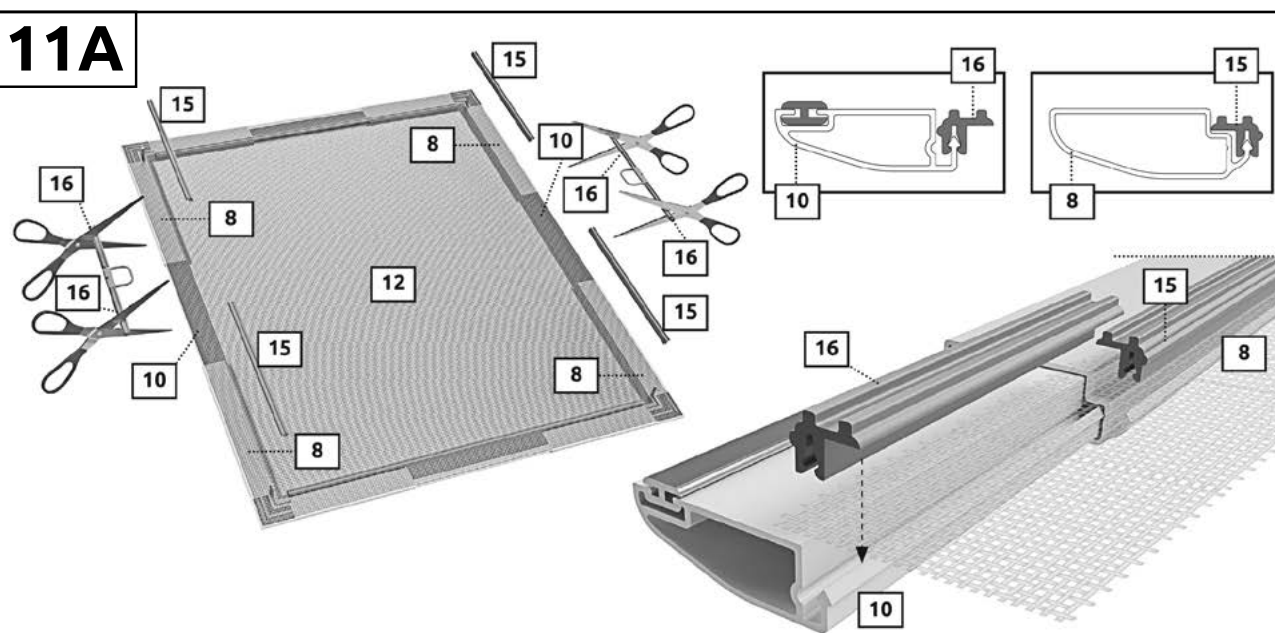
10



Shorten both middle clip rods **13** according to the length of the middle sections **11**. Then attach the material **12** at the top and bottom using the clip rods **13** and **14** to the sections **9** and **11**. Take note of the position of the clip rods.

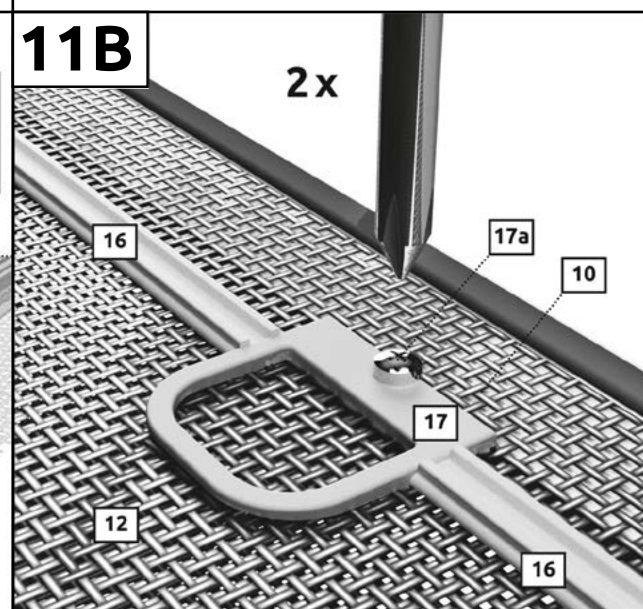


11A



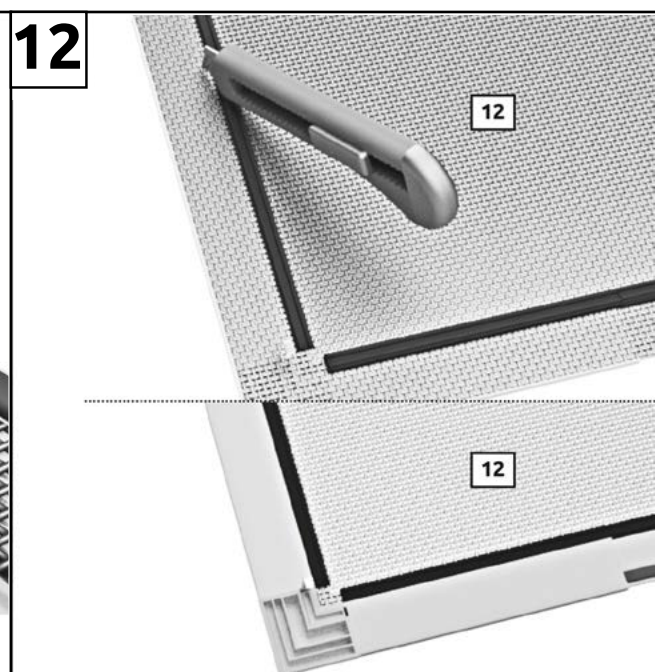
Shorten the middle clip rods on the left and right **16** according to the length of the middle sections **10**. Be aware of the 3 cm grip length in the centre of the clip rod **16**. Then attach the material **12** at the left and right using the clip rods **15** and **16** to the sections **8** and **10**. Take note of the position of the clip rods.

11B



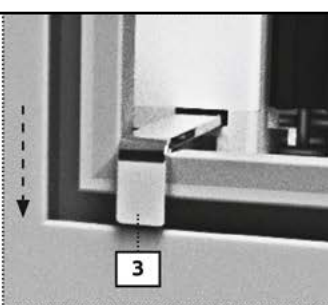
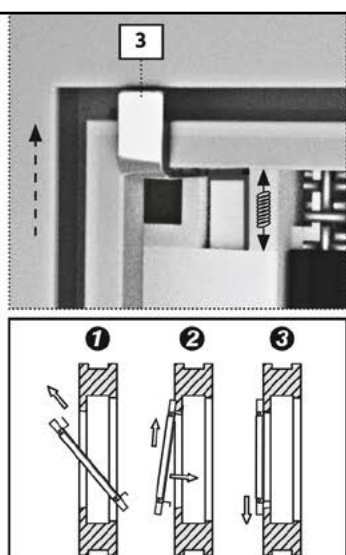
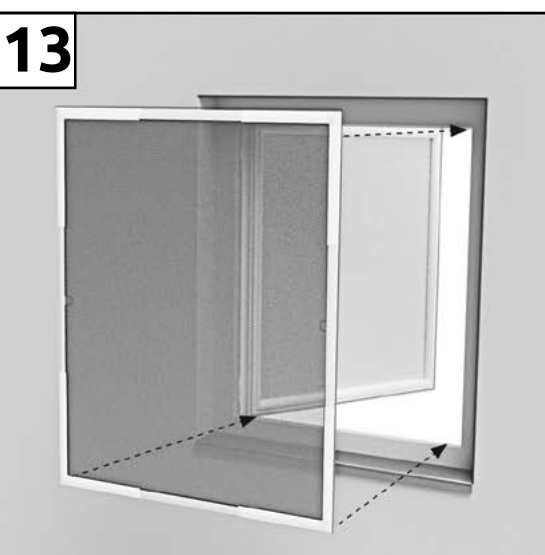
Attach the grips **17** left and right with screws **17a** to the middle of the frame sections **10**.

12



Shorten the material **12** all around the outside of the clip rods with a cutter.

13



The insect screen is now ready for mounting. Open your window and place your insect screen frame. Guide the upper suspension hooks **3** into the blind frames from the outside. Pull the frames in and push them down so the lower suspension springs **3** attach behind the blind frame. Stay safe and do not lean out of the window – danger of falling!

